

contents

02 Notice, connect, support

03 Prefectural government news

This month's topics

04 [Serial] Taro Yabe × Takasugi 'Jay' Jiro goes over there, here Yamanashi

The manager's destination

Connecting with "information" and "peace"

The new relationship between podcasts and carers

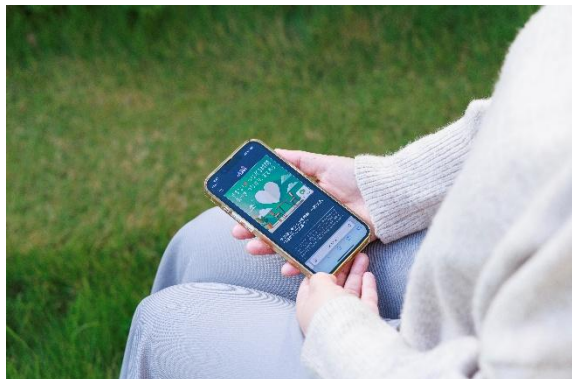
A podcast program sent by Yamanashi Prefecture has begun.

The theme is "carers" who care for and care for family members.

However, it is not a formal program.

We aim for a time where people who are worried can be a little more positive.

Please take a breather anytime, anywhere, on your smartphone or computer.



Notice, connect, support, and call directly

"Yamanashi ♡ connection time～notice,connect,support～.This podcast is a program that fosters a 'comfortable place' for those of you who listen to it, such as carers, caregivers, hikikomori, and women with difficulties." Twice a month, on Thursdays, when you hear the gently enveloping voice of personality Miho Hamasaki, it is the beginning of the program.

This program is recorded in the radio studio, where guests are invited every time and listen to real experiences related to nursing care and care, and think together, "What should I do in times like this?" But unlike radio, podcasts can be watched anytime, anywhere as long as you have a computer or smartphone. You can also listen to past streams

Each time there is a 30-minute "Yamanashi ♡ connection time", the first and second guests are Natsu Ando of the comedy duo "Maple Chogokin". I have a national qualification as a care worker and have been engaged in the care profession for more than 20 years.

"Nursing care work may seem difficult, but it is a rewarding job.

The guest of the third and fourth times was Mrs. Asei Machi, a freelance announcer. When I was 18 years old, my mother collapsed from a subarachnoid hemorrhage, and I became a young carer who took care of my younger siblings by myself. While taking care of her, she took the university entrance exam and worked as an announcer for Japan Television.

Mrs. Machi recalls that when he was balancing her mother's care with her studies and work, she was unable to rely on those around her, and appealed that "the ability to receive support by asking for help and accepting support when you are in trouble is important" and "asking for help is not a weakness."

Why did the prefecture start supporting carers with podcasts? "The prefectural support for carers is from three perspectives: 'awareness, connection, and support,' and this podcast is a medium that is responsible for 'connecting' among them," said Yuto Kimura, director of the Prefectural Labor and Work Style Support Division.

The current situation is that it is difficult for people with difficulties to speak up. "People who are really in trouble will not come just by waiting at the counter, and I wanted to send a message that would directly call out to carers from the government," he says. "The issue of carers is a common theme throughout the country, and the governor of Nagasaki is also promoting this program, saying, 'I want people all over the country to listen to it.'"

In the future, we will expand our focus not only to carers but also to people with various difficulties in life, such as hikikomori and women with difficulties, and we are eager to

expand the circle of empathy from the experiences of guests and listeners, rather than delivering information unilaterally.

Masumi Yamakawa of the "Youth Independence Support Center Ippo", which is involved in supporting the independence of young people, was one of the people who sympathized with this program after listening to it. "There are days when we as supporters don't do well and we get depressed, but listening to this program warms my heart," she says. There was a time when he was taking care of his parents while working, and after hearing the town's story, she realized that he was a business caregiver.

Mrs. Yamakawa gathers young people with various circumstances.

"Some children call in the middle of the night in panic saying, 'Their parents have been hospitalized,' and everyone suddenly becomes a caregiver due to a family illness or injury. I want the younger generation, who think it doesn't matter, know the knowledge and information."

Even children who can't say "help" on their own hope that "if it's a podcast that you can listen to casually, it won't get too serious and will be an opportunity to talk."

"Yamanashi ♥ connection time" is not a place to impose expertise or correct answers. It is a warm "voice media" that allows you to empathize and feel connected through someone's story, saying, "I felt that way too."



Personality: Miho Hamasaki

Talking about carers tends to be difficult, but this program welcomes guests and talks about things other than nursing care and care. It's not only about learning, but also about entertainment, so I'd be happy if you could feel free to listen to it.

I want a society where people can talk about nursing care on a daily basis, just like asking "How are you doing?" at a café.

The good thing about podcasts is that you can talk to "you" on the other side of your smartphone or computer. Rather than encouraging "Let's do our best!", I would like to be able to speak in a voice that relieves the tension in my heart.



Free announcer: Asei Machi

I was taking care of my family when there was no long-term care insurance. In the meantime, the one who always cared about me was an aunt in the neighborhood who brought me a heaping of fried chicken, saying, "Are you eating properly?" People who are really in trouble may continue to put up with it without being able to talk to anyone, and their hearts may suddenly break.

I think it is an important step for the government to not only wait at the window, but also to call out through podcasts, "There is support like this."

Even if it's a thin thread, if you don't break the "connection", you will feel like "I should consult with you for a while".

Twice a month, Thursday morning delivery

How to listen to podcasts

Yamanashi ♡ Time to connect~Awareness, Connection, and Support for Each Other~

① Watch from your computer

Enter "Yamanashi Connecting Time" in the search function, or access the official website (<https://radiko.jp/podcast/channels/016dc8aa-6897-4783-97b7-a32d9defc135>)

② Watch from your smartphone

Install ➡ the radiko app on your smartphone and press "search" to ➡ search for "Yamanashi connection time"

*In addition to radiko, it will also be distributed on major podcast platforms (AuDee/Spotify/Apple Podcast/Amazon Music).



(Photo) Mrs. Masumi Yamakawa of the "Youth Independence Support Center" listening to the podcast on the bench

Prefectural government news

Green Hydrogen

The beginning of the energy revolution

Yamanashi Model P2G System

To commemorate the commissioning of the facility where the Yamanashi Model P2G System, a hydrogen production equipment jointly developed by the prefecture and a private company, was held at the Green Hydrogen Park in Hokuto City on October 11 and the Keihinjima Green Hydrogen Plant in Ota Ward, Tokyo on October 23.

The Hokuto City facility is the largest green hydrogen* production base in Japan, and we will proceed with a demonstration of converting the fuel of the boiler used at Suntory natural water Minami Alps Hakushu Plant from natural gas to hydrogen. The facility in Ota Ward is the first large-scale green hydrogen production base in Tokyo, and is expected to develop and expand in the future as a model case for local production and local consumption of hydrogen in the city center.

Governor Nagasaki said at the ceremony in Hokuto City, "I feel joy and pride in having reached a historic moment in the energy revolution that will surprise the world."



international exchange

40th Anniversary of Friendship with Sichuan Province, China

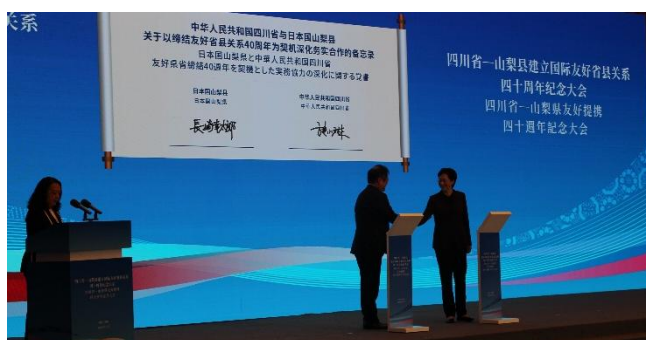
To a new stage

From October 26 to 29, the prefecture visited China with about 100 people from related municipalities, as well as related organizations and companies in the prefecture, including related municipalities, industries, and welfare in the prefecture, to participate in the ceremony commemorating the 40th anniversary of the establishment of friendship between the prefecture and Sichuan Province.

At the ceremony, Yamanashi Prefecture and Sichuan Province signed a memorandum of understanding to strengthen cooperation in various fields, such as mutual dispatch of chefs, mutual exchange of youth, and promotion of exchanges in the field of nursing care. They also pledged to promote women's participation in the workplace and collaborate in the field of hydrogen.

Until now, we have mutually dispatched technical staff and accepted administrative staff with the ministry. In the future, we will aim for new cooperation for the development of the two regions and the resolution of issues.

At the ceremony, Governor Nagasaki said, "I hope that Yamanashi Prefecture and Sichuan Prefecture will continue to exchange and become a driving force for inter-regional exchanges between Japan and China, and that new value will be created in both countries."



This month's topics

• Yamanashi Prefecture income certificate will be abolished 〈Notice〉

Sales: Until the end of December 7, Reiwa

Use: Until Tuesday, March 31, Reiwa 8

Refund: Until Friday, December 27, Reiwa 12

In addition to cash, you can also choose various cashless payments as a way to pay fees to the prefecture. For details on the new storage method and storage window, please check the prefectural website.

Contact: Accounting Division

TEL 055-223-1308/FAX 055-223-1310

• We will hold a paper party training session 〈Notice〉

We hold training sessions for those who have a teaching license but have no teaching experience, or those who have been away from the field and are willing to work at school.

▶ Date and time Saturday, December 20, 10 a.m. ~ noon ▶ Location: 3rd floor ▶ of the Prefectural Disaster Prevention New Building Target: Those ▶ who have a teaching license from one of the elementary, junior high, high school, or special needs school How to apply Dedicated application form, email, mail, or phone ▶ Application period ~ Thursday, December 18

Contact: Compulsory Education Division

TEL 055-223-1757/FAX 055-223-1759

• Recruitment of students for the new academic year

Kyonan Advanced Technical College

General Admission (Second Term)

▶ Application Period: January 9 (Fri) ~ February 13 (Fri) Examination ▶ Date: February 27 (Fri)

Contact: TEL 0556-22-3171 / FAX 0556-22-3172

Prefectural University

General Selection (First and Second Terms)

▶ Application Period: January 26 (Mon) ~ February 4 (Wed) Examination ▶ Date First Semester February 25 (Wed) Second Semester March 12 (Thu)

Contact: TEL 055-253-8901 / FAX 055-224-5386

Industrial Technology Junior College

General Entrance Examination (Second Term)

▶ Application Period: January 5 (Mon) ~ 23 (Fri) Examination ▶ Date: January 30 (Fri)

Contact: TEL 0553-32-5201

College of Agriculture and Forestry

General Entrance Examination (Second Term)

▶ Application Period: January 6 (Tue) ~ 19 (Mon) Examination ▶ Date: January 29 (Thu)

Contact: Nagasaka Campus (Department of Fruit Trees, Department of Horticulture, Department of Horticulture) TEL 0551-32-2269 / FAX 0551-32-2034

Fujikawa Campus (Department of Forestry) TEL 0556-42-7080 / FAX 0556-22-8002

• Nursing staff employment guidance held

▶ Date and time December 12 (Friday) 1:30 p.m. ~ 3:30 ▶ p.m. Venue: Nursing Education and Training Center (Kofu City) ▶ Target: Nursing qualification holders, nursing students, and those who ▶ wish to work as nursing assistants Contents Interview with facilities that are recruiting nursing staff, provision of job openings and employment-related information

▶ Participation fee: Free

Contact: Yamanashi Prefectural Nurse Center TEL 055-226-0110

• Bibliobattle Recruitment of Spectators

Introducing the charm of the book recommended by Butler (presenter) in 5 minutes. The vote of the audience (spectators) determines the "book you want to read the most (champ

book)". Spectators do not need to register in advance.

▶ Date and time: December 7 (Sun) ▶ Venue: Prefectural Library

Contact: Social Education Division TEL 055-223-1772 / FAX 055-223-1775

• **Recruitment of civil engineering facility environmental volunteers**

Why don't you clean up the roads, rivers, and parks around you and plant flowers to make it an attractive city? We are looking for organizations that can cooperate with beautification activities. The prefecture will provide necessary tools for activities and support participants in purchasing accident insurance.

▶ Target organizations Neighborhood associations, senior citizens' clubs, companies, schools, volunteer groups, etc. Groups of 5 or more ▶ people Target facilities Roads, rivers, parks, etc. managed by the prefecture

Contact: Road Management Division TEL 055-223-1695 / FAX 055-223-1699

• **Farmers, would you like to join income insurance?**

Income insurance is a system that compensates for a decrease in income due to risks such as natural disasters and theft that are unavoidable in management efforts. If your income during the insurance period falls below 90% of your standard income, you will be compensated up to 90% of the amount you have fallen.

▶ Target Farmers (individuals/corporations) who are filing a blue tax return New ▶ application deadline Individual: End of December Corporation: Up to the day before the start date of the business year

Contact: Yamanashi Prefecture Agricultural Mutual Aid Association TEL 055-228-4711 / FAX 055-228-4715

Taro Yabe and Takasugi 'Jay' Jiro go here and there Yamanashi

〈Yamanashi connoisseurs competing for one or two with Yoshimoto Kogyo's talent〉

The hot springs that both people like that and this person used are the property of Yamanashi Prefecture!

Taro Yabe(Manga artist, comedian)

Born in Higashimurayama City, Tokyo. In 2017, he made his debut as a manga artist with "The Landlord and Me", which became a bestseller. Appeared in the 2024 taiga drama "To the Shining Kimi" as Otomaru. His latest book is "Self-Love".

Jiro Takasugi 'Jay' (Sports DJ, Radio DJ)

Born in Katano City, Osaka Prefecture. The DJ is prepared in the United States. He is also a special lecturer at Yamanashi Prefectural University. Every Saturday from 11 a.m., he appears live on the program on FM stations in Yamanashi Prefecture. There are also SUP schools in the Fuji Five Lakes.

〈Taro〉 I went to Yumura Onsen on location on TV. "Dazai's Inn" will open.

〈Jiro〉 "Ryokan Meiji" opened in August. The old thing has become completely new.

〈Taro〉 The room where Osamu Dazai, who spent his newlywed days in Kofu, stayed and wrote was also reproduced.

〈Jiro〉 Dazai Osamu Data Room.

〈Taro〉 The room is in the shape of the cloak that Dazai was wearing, and it's cool. I used the hot springs where Dazai also entered, and I felt like I could write more and more masterpieces (laughs).

〈Jiro〉 By the way, I am a "hot spring sommelier ambassador".

〈Taro〉 Huh? Amazing!

〈Jiro〉 There are 331 hot springs in Yamanashi Prefecture, and the amount of spring water is higher than that of Kanagawa Prefecture, which has Hakone (*).

However, I wonder if the people of the prefecture are unexpectedly aware of it.

〈Taro〉 On location, I also went to Akaishi Onsen in Fujikawa Town. There is a large open-air bath that my husband made by hand. I was surprised that there was even

a water wheel.

- 〈Jiro〉 In Narada Onsen in Hayakawa Town, there is also a "Empress's Bath" where an empress named Emperor Koken entered. Yamanashi's hot springs have a great history and I think they are really an asset.
- 〈Taro〉 I often hear that it is called "Shingenko's hidden hot spring".
- 〈Jiro〉 There is a letter that Takeda Shingen ordered the development of Kawaura Onsen in Yamanashi City.
- 〈Taro〉 It's all over the place.
- 〈Jiro〉 The history is amateur, but I guess the hot springs in the mountains where hunters were located were hidden from others as soldiers.
- 〈Taro〉 I also went to Okuyama Onsen in Nanbu Town on location. It was really deep in the mountains.
- 〈Jiro〉 But it was a hot spring that I was glad I came, right?
- 〈Taro〉 Yes, really.
- 〈Jiro〉 I think there are still many hot springs that even the people of the prefecture have never been to. There are all hot springs that you will really like if you go there.

Source: Ministry of the Environment "Reiwa 5 hot spring usage status"

The Favorite Places of the Curious Section Chief

This time I will introduce you to
Katsunuma Brewing Co., Ltd. Direct Sales Team Leader
Megumi Sano



To convey the excitement of that day

I changed my career from cosmetics sales and am currently involved in wine sales. I had no connection with alcohol, and when I first joined the company as a temporary employee, I struggled with technical terminology.

I was promoted to a full-time employee, and to celebrate that, I visited "Kappo

Ashigawa". The plump and juicy eel was exceptional. In addition, we also carry our wines, and the marriage of authentic Japanese food and Koshu wine, such as eel and sashimi, is unforgettable.

With that excitement in my heart, I am working on training by conveying what I have learned from my seniors and my own experience to the staff. At the Yamanashi Nouveau event on November 3rd, the day the ban on new sake was lifted, many customers visited the store.

I feel that there are still a few people who enjoy wine in Japan. Like me in the past, if there is an opportunity, you will be interested in wine and fall in love with it. With this in mind, I would like to convey the charm of Koshu wine that is close to the dining table from the storefront.

Kappo Ashigawa (main store)

〒404-0042 Yamanashi Koshu City Enzan kamiozo 1094

Phone number: 0553-33-4455

Business hours: 11:30~14:00, 17:30~20:00

Closed: Sundays, irregular holidays



Reader Gift

Answer the questionnaire and apply!

Please answer the following ❶~❺ questionnaire.

Please apply using the "Application Form".

❶ Postal code ❷ Address ❸ Name ❹ Age ❺ Phone number

*Application is limited to one person per person.

Q: What was the most interesting content in this issue and why?

*We may introduce some of the opinions we receive.

Click here for the application form

<https://forms.office.com/r/SUGHpXyUir>

Deadline: December 31 (Wed) Postmark valid on the day

We will replace the announcement of the winner with the shipment of the product.

Personal information may be used for shipping products and notifications from the prefecture.

You can easily enjoy cooked rice made by a long-established Japanese cuisine restaurant at home

Loose rice base set (Koshu Jidori, Fuji cherry blossom pork, Fuji no suke)

5 people by lottery

Product provided by: Kappo Tatsuyoshi

〒400-0601

Yamanashi Prefecture Minami-Koma-gun Fujikawa-cho Kazikazawa 1232

Phone number: 0556-22-0427



The contact monthly can also be read in English and Chinese.

FUREAI MONTHLY is also available in English and Chinese.

Petting Monthly Vol.6

December 1, Reiwa 7

Published by Yamanashi Prefecture Public Relations Group

〒400-8501 1-6-1 Marunouchi, Kofu City

TEL 055-223-1338 FAX 055-223-1525

The next issue is Sunday, February 1, Reiwa 8

It is scheduled to be folded.