

11 Shiki Shinsen Shukaku Hiroba Ta • Kara Farmer's Market
 102-1 Usuiawara, Chuo-shi ☎ 055-274-0831 📍 30 spots
 9:00~17:00 🗓 New Year's holidays (12/31~1/4)
 🍅 Tomatoes, Cucumbers, Taros

12 JA Yamanashi-Mirai Farmer's Market I-na Toubu Showa
 960-1 Ikkui, Showa-cho, Nakakoma-gun ☎ 055-298-4117 📍 50 spots
 9:00~18:00 🗓 No regular holidays
 🍅 Tomatoes, Cucumbers, Sweetcorns

13 JA Fruit Yamanashi Fruit Farmer's Market Yahata Shop
 239 Kita, Yamanashi-shi ☎ 0553-23-3914 📍 50 spots
 🗓 May to September 8:30~17:30, October to April 8:30~17:00
 🗓 October to April the second Tuesdays, New Year's holidays 🍎 Vegetables, Grapes, Peaches

14 JA Fuefuki Fujimi Branch Farmer's Market
 265 Higashi-Takahashi, Isawa-cho, Fuefuki-shi ☎ 055-262-3853 📍 15 spots
 🗓 May to November 8:30~17:00, December to April 9:00~16:00 🗓 Tuesdays, Bon holiday, New Year's holidays
 🍑 Peaches, Grapes, Persimmons (Fuyu)

15 Sakaigawa Farmer's Market
 702 Ishibashi, Sakaigawa-cho, Fuefuki-shi ☎ 055-266-7700 📍 50 spots
 🗓 April to October 9:00~18:00, November to March 9:00~17:00
 🗓 Mondays (the next day if it falls on a holiday) 🍌 Sweetcorns, Peaches, Grapes

16 Yatsushiro-cho Farmer's Market (Green Farm Yatsushiro)
 4632-1 Minami, Yatsushiro-cho, Fuefuki-shi ☎ 055-265-2121 📍 50 spots
 9:00~17:00 🗓 Tuesdays, New Year's holidays
 🍑 Peaches, Grapes, Sweetcorns

17 Michi-no-eki Fujikawa (roadside rest and shopping area)
 1655-3 Aoyagi-machi, Fujikawa-cho, Minamikoma-gun ☎ 0556-48-8700 📍 63 spots
 9:00~18:00 🗓 Open every day, but may close temporarily
 🍌 Grapes, Peaches, Cherries

18 Michi-no-eki Fujiyoshida (roadside rest and shopping area)
 1936-6 Araya, Fujiyoshida-shi ☎ 0555-21-1033 📍 119 spots
 9:00~19:00 (July to September 8:30~19:00, December to March 9:00~18:00)
 🗓 Varies from season to season 🍌 Sweetcorns, Peaches, Grapes

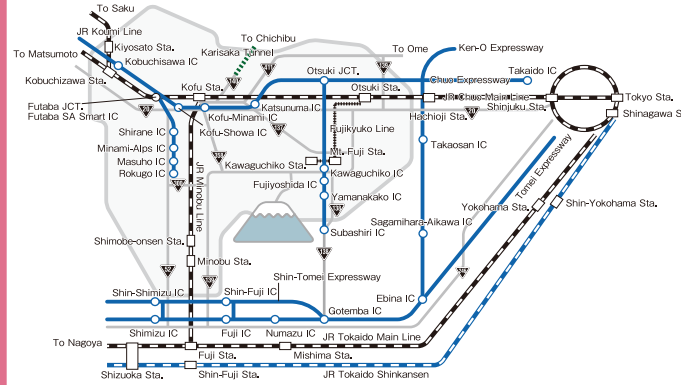
19 Michi-no-eki Tsuru (roadside rest and shopping area)
 88 Ohara, Tsuru-shi ☎ 0554-43-1110 📍 50 spots
 🗓 April to December 9:00~17:30, January to March 9:00~17:00 🗓 New Year's holidays (12/31~1/4)
 🍌 Fuji natural spring water pork, Mizukakena (Mizukake green), Charcoal vegetable gelato

20 Dangozaka SA Yasai-mura
 4943 Ono, Uenohara-shi ☎ 0554-66-4665 📍 466 spots
 🗓 April to November 9:30~17:30, December to March 10:00~17:00 🗓 New Year's holidays
 🍌 Vegetables grown in Uenohara City

21 JA Narusawa-mura Michi-no-eki Narusawa Products Shop
 8532-63 Narusawa-mura, Minamitsuru-gun ☎ 0555-85-3366 📍 260 spots
 9:00~18:00 (August 8:00~20:00, September 9:00~19:00) 🗓 Open every day
 🍌 Cabbages, Sweetcorns, Blueberries

Access

Access to Yamanashi



To Kofu

[By car]

From Tokyo	Takaido IC	Chuo Expressway / About 1 hr 30 min	Kofu-Showa IC	
From Kanagawa	To Yokohama	Ebina JCT. <small>Ken-O Expressway / About 20 min</small> Hachioji JCT. <small>Chuo Expressway / About 1 hr</small>	Kofu-Showa IC	
From Saitama	<small>Ken-O Tsugushima IC</small>	<small>Ken-O Expressway / About 30 min</small> Hachioji JCT. <small>Chuo Expressway / About 1 hr</small>	Kofu-Showa IC	
From Nagano	Matsumoto IC	Nagano Expressway / About 20 min	Okaya JCT. <small>Chuo Expressway / About 50 min</small>	Kofu-Showa IC
From Aichi	Nagoya IC	Chuo Expressway / About 3 hr	Kofu-Showa IC	
From Shizuoka	To Shizuoka	National Route 52 / About 1 hr 30 min	Masuhio IC <small>Chubu-Odan Expressway / About 20 min</small>	Kofu-Showa IC
	To Gotemba	National Route 138 / About 30 min	Subashiri IC <small>Higashi-Fujigata Road Chuo Expressway (via Otsuki JCT) / About 1 hr</small>	Kofu-Showa IC

[By Train]

From Tokyo	Shinjuku Sta.	JR Chuo Main Line / About 1 hr 30 min	Kofu Sta.
From Nagano	Matsumoto Sta.	JR Chuo Main Line / About 1 hr	Kofu Sta.
From Shizuoka	Shizuoka Sta.	JR Minobu Line / About 2 hr 10 min	Kofu Sta.

[By Expressway Bus]

From Tokyo	Shinjuku Expressway Bus Terminal	Shinjuku - Kofu Line / About 2 hr	Kofu Sta.
From the Airport	Haneda Airport	Haneda Airport - Ryuo / Kofu Line / About 3 hr 10 min	Kofu Sta.
	Narita Airport	Narita Airport - Ryuo / Kofu Line / About 3 hr 30 min	Kofu Sta.
From Shizuoka	Shizuoka Sta.	Shizuoka - Ryuo / Kofu Line / About 3 hr	Kofu Sta.
From Aichi	Nagoya Sta.	Nagoya - Ryuo / Kofu Line / About 4 hr	Kofu Sta.
From Kansai	Osaka (Abenobashi)	Kyoto / Osaka - Kofu Line / About 9 hr	Kofu Sta.

[Edit / Publication]

Marketing and Export Support Office Agriculture Department
 Yamanashi Prefectural Government
 1-6-1 Marunouchi, Kofu City, Yamanashi Prefecture
 Tel: 055-223-1603 (Japanese only)

Farmer's Markets Guide Map



~ Welcome to Yamanashi, the Fruit Kingdom ~

Yamanashi is the number one producer of peaches, grapes and plums in Japan. Yamanashi's Farmer's markets sell these fruits along with a variety of other produce. Please come and visit Yamanashi's farmer's markets!

<Note>

- This guide aims to introduce the most important farmer's markets in Yamanashi. However, this does not serve as official endorsement by the prefecture.
- For more details, please contact the individual markets. (Japanese only)
- Those who want to take produce with them out of Japan can check the following website for quarantine information.
<http://www.maff.go.jp/pps/> (Or search for "Plant Protection Station")
- For those who wish to send produce abroad, please read the following website.
<http://www.post.japanpost.jp/int/> (Or search for "Japan Post")
- Depending on the country or region, it may not be possible to send produce.
- The information here is as of April 2017. May be subject to changes.
- Yamanashi Prefecture is not liable for any damages or loss incurred through use of this guide.

Farmer's Markets MAP

Legend

- 📍 Address
- ☎ Phone number
- 🅑 Parking spaces for cars
- 🕒 Opening Hours
- 📅 Holidays
- 🌿 Featured agricultural products

Chuhoku area

- 01 JA Zen-noh Yamanashi Farmer's Market Taberu JAN Yamanashi**

 - 📍 1421-1 Aoba-cho, Kofu-shi
 - ☎ 055-225-1001
 - 🅑 70 spots
 - 🕒 April to December 9:30~18:00, January to March 9:30~17:30
 - 📅 Wednesdays (open on national holidays)
 - 🌿 Baked sweet potatoes, Peaches, Sweetcorns
- 02 Fudoki no Oka Farmer's Market**

 - 📍 1070-3 Shimosone-cho, Kofu-shi
 - ☎ 055-266-3858
 - 🅑 76 spots
 - 🕒 9:00~18:00
 - 📅 Tuesdays (the next day if it falls on a holiday)
 - 🌿 Sweetcorns, Peaches, Kiwifruit
- 03 JA Rihoku Farmer's Market Yottekeshi Nirasaki Shop**

 - 📍 1031-1 Nakajo, Nakada-machi, Nirasaki-shi
 - ☎ 0551-30-0182
 - 🅑 40 spots
 - 🕒 9:00~18:00
 - 📅 Tuesdays
 - 🌿 Peaches, Chinese yams, Spinach
- 04 JA Alps Minami-Michi-no-eki Shirane Farmer's Market**

 - 📍 587-1 Zaiketsuka, Minami-Alps-shi
 - ☎ 055-280-2100
 - 🅑 50 spots
 - 🕒 May to September 8:30~18:00, October to April 9:00~17:00
 - 📅 12/30~1/2
 - 🌿 Cherries, Grapes, Peaches
- 05 Michi-no-eki Kobuchisawa (roadside rest and shopping area)**

 - 📍 2968-1 Kobuchisawa-cho, Hokuto-shi
 - ☎ 0551-36-3280
 - 🅑 138 spots
 - 🕒 May to September 9:00~19:00, October to April 9:00~18:00
 - 📅 The first Thursday in June, the second Monday and Tuesday in February
 - 🌿 Tomatoes, Sweetcorns, Rhubarbs
- 06 Michi-no-eki Hakushu (roadside rest and shopping area)**

 - 📍 1308 Shirasu, Hakushu-cho, Hokuto-shi
 - ☎ 0551-20-4713
 - 🅑 87 spots
 - 🕒 9:00~18:00
 - 📅 Wednesdays from December to March, New Year's holidays
 - 🌿 Rice, Apples, Gobo roots
- 07 Hokuto-shi Mukawa-cho Farmer's Market**

 - 📍 682-2 Maginohara, Mukawa-cho, Hokuto-shi
 - ☎ 0551-26-3074
 - 🅑 30 spots
 - 🕒 March to November 9:00~17:30, December to February 9:00~17:00
 - 📅 Tuesdays from January to February, New Year's holidays (12/29~1/3)
 - 🌿 Rice, Chinese yams, Natto (fermented beans)
- 08 JA Yamanashi-Mirai Farmer's Market I-na Toubu Ryuo**

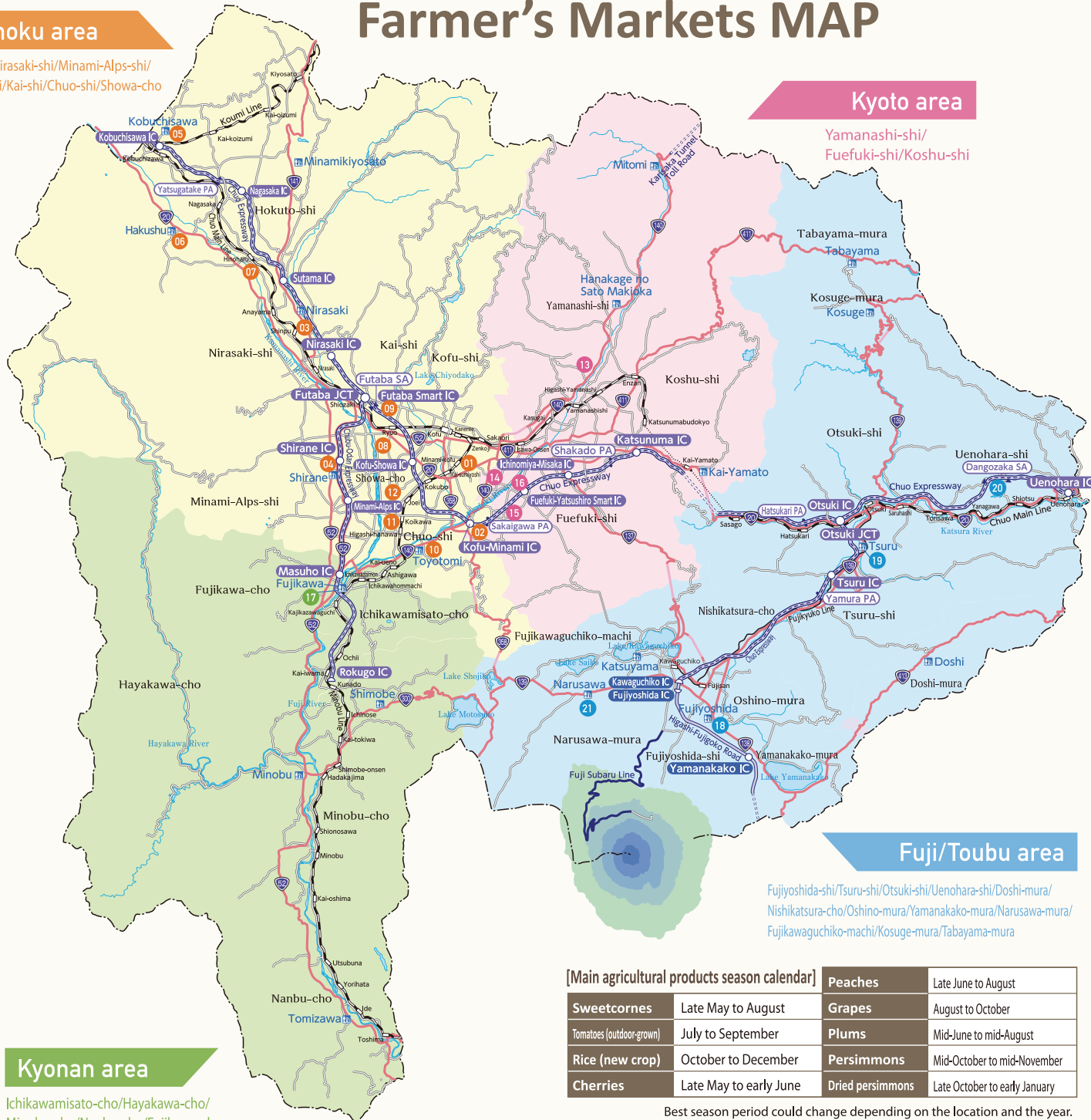
 - 📍 2635 Shinohara, Kai-shi
 - ☎ 055-267-2399
 - 🅑 105 spots
 - 🕒 9:00~18:00
 - 📅 New Year's holidays, No regular holidays
 - 🌿 Yahata potatoes, Cucumbers, Tomatoes
- 09 JA Rihoku Farmer's Market Yottekeshi Hibikigaoka Shop**

 - 📍 2782-3 Ryuji, Kai-shi
 - ☎ 0551-28-7885
 - 🅑 26 spots
 - 🕒 9:00~18:00
 - 📅 Wednesdays
 - 🌿 Rihoku rice, Grapes, Tomatoes
- 10 Michi-no-eki Toyotomi (roadside rest and shopping area)**

 - 📍 1010-1 Asari, Chuo-shi
 - ☎ 055-269-3424
 - 🅑 76 spots
 - 🕒 9:00~18:00
 - 📅 The 3rd Monday of each month (the next day if it falls on a holiday), New Year's holidays
 - 🌿 Sweetcorns, Peaches, Grapes

Chuhoku area

Kofu-shi/Nirasaki-shi/Minami-Alps-shi/
Hokuto-shi/Kai-shi/Chuo-shi/Showa-cho



Kyoto area

Yamanashi-shi/
Fuefuki-shi/Koshu-shi

Fuji/Toubu area

Fujiyoshida-shi/Tsuru-shi/Otsuki-shi/Uenohara-shi/Doshi-mura/
Nishikatsura-cho/Oshino-mura/Yamanakako-mura/Narusawa-mura/
Fujikawaguchiko-machi/Kosuge-mura/Tabayama-mura

Kyonan area

Ichikawamisato-cho/Hayakawa-cho/
Minobu-cho/Nanbu-cho/Fujikawa-cho

[Main agricultural products season calendar]

Sweetcorns	Late May to August	Peaches	Late June to August
Tomatoes (outdoor-grown)	July to September	Grapes	August to October
Rice (new crop)	October to December	Plums	Mid-June to mid-August
Cherries	Late May to early June	Persimmons	Mid-October to mid-November
		Dried persimmons	Late October to early January

Best season period could change depending on the location and the year.
Some farmer's markets hold events when the products are in season.